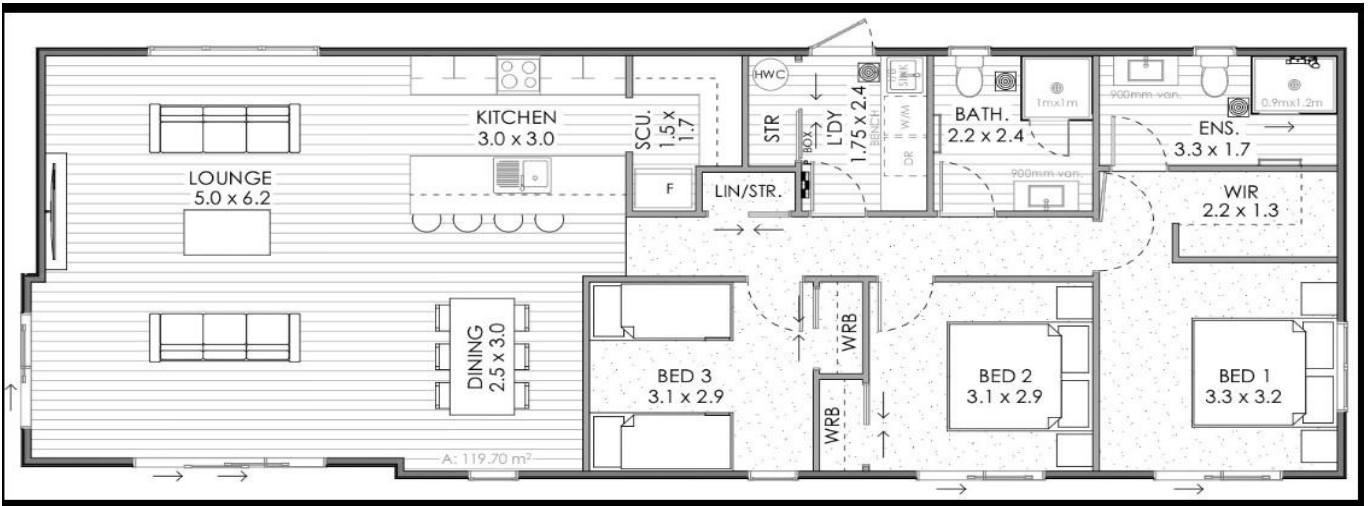


Huxton 3 bed 2 bath 18.4 Meters long x 6.6 meters wide 120 M2



Thoughtfully Designed for Modern Living

The Huxton design is packed with thoughtful features, offering a perfect blend of style and functionality. The open living area is strategically positioned at one end of the home to maximize your site's aspect and create a seamless connection to outdoor living spaces.

An impressive well-appointed kitchen and generous scullery provide ample storage, keeping everything organised while positioning the chef front and centre—perfect for modern living and effortless entertaining.

Three double bedrooms are thoughtfully aligned to offer easy access to a future wrap-around deck, enhancing the sense of space and natural light. The master suite makes clever use of space, featuring a walk-in wardrobe and a generous ensuite for added comfort and privacy. With plenty of storage throughout, a spacious laundry with exterior access, and a carefully considered floor plan, the Huxton truly delivers everything you could want in a well-designed, functional transportable home.

The Huxton is available in both Skillion and Gable roofing profiles.

Mobile: 0419 487 187 **E:** sales@1300homes.com.au **W:** www.1300homes.com.au