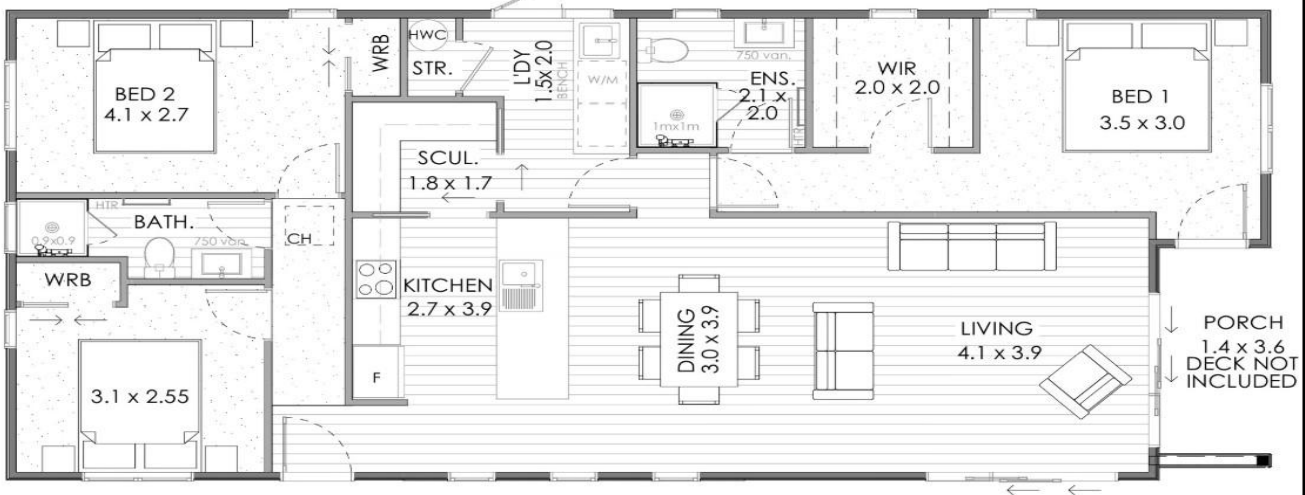


Tory 3 Br 2 bath 15.7 meters long x 7.2 meters wide 113 M2



**Floor plans can be flipped or mirrored to suit your site. *Decking material not included. Artists impression only.*

Clever Design, Harmonious Living

This beautifully designed transportable home offers the perfect balance of style, comfort, and functionality. At its heart, a spacious open-plan living and entertaining area, with a clever kitchen and scullery design that flows effortlessly into practical service spaces, ensuring easy movement and plenty of storage.

Enjoy 3 bedrooms with your own private master suite, a true retreat, featuring a generous walk-in wardrobe, a modern ensuite, and direct access to a covered outdoor porch—perfect for quiet moments of relaxation. The additional bedrooms provide a welcoming haven for family or guests, with a convenient shared bathroom for added comfort.

The Tory looks stunning in either a **Gable** or **Mono** roofline profile, you can choose the style that reflects you best with this plan.

Mobile: 0419 487 187

E: sales@1300homes.com.au **W:** www.1300homes.com.au